

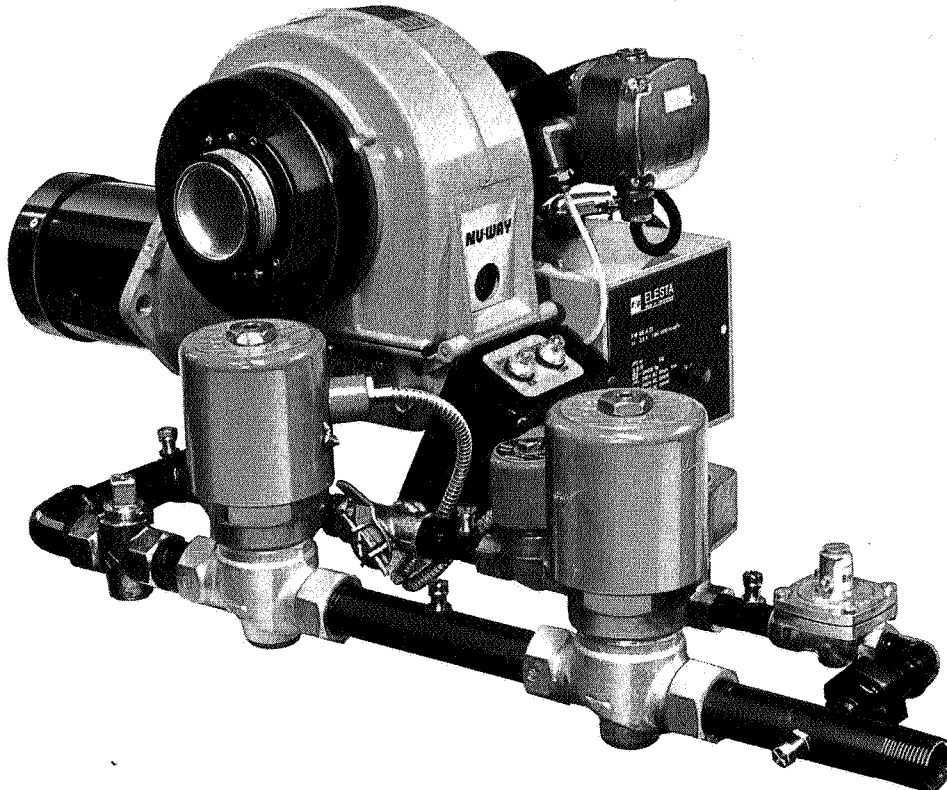
NU-WAY



Technical data

automatic gas burners

MODEL CG2



The Nu-way CG2 blown gas burner is designed for automatic operation with burner capacity from 35–147 kW (1.2–5.0 therm/h; 30,000–126,000 kcal/h; 120,000–500,000 Btu/h) against balanced draught conditions. It is also able to fire, at reduced output, appliances having resistances as listed under the burner selection chart. Available for on/off operation, the burner is built to comply with relevant standards.

FUEL

Available in versions to burn manufactured, natural gas or LPG (Liquid Petroleum Gas).

GAS SUPPLY SYSTEM

The burner comes complete with a gas train, built to comply with relevant standards, and consisting of main and pilot line governors, control valves and manual gas cocks.

CONSTRUCTION

Monobloc metric design using fastenings to ISO standards. Suitable for flange mounting. Access to the inner assembly is by hinging away the fan casing.

AIR REGULATION

The combustion air is controlled by a fixed damper, which can be adjusted. Burner fitted with a patented air control device producing smoother starting conditions.

CONTROLS

Flame supervision is by ionization probe with automatic sequence controller. The burner may be controlled by suitable thermostats, pressure switches, time switches, frost-stats, etc. An adjustable air pressure switch gives protection if the combustion air is, or becomes, insufficient.

APPROX. WEIGHT

21 kg.

ELECTRICAL DATA

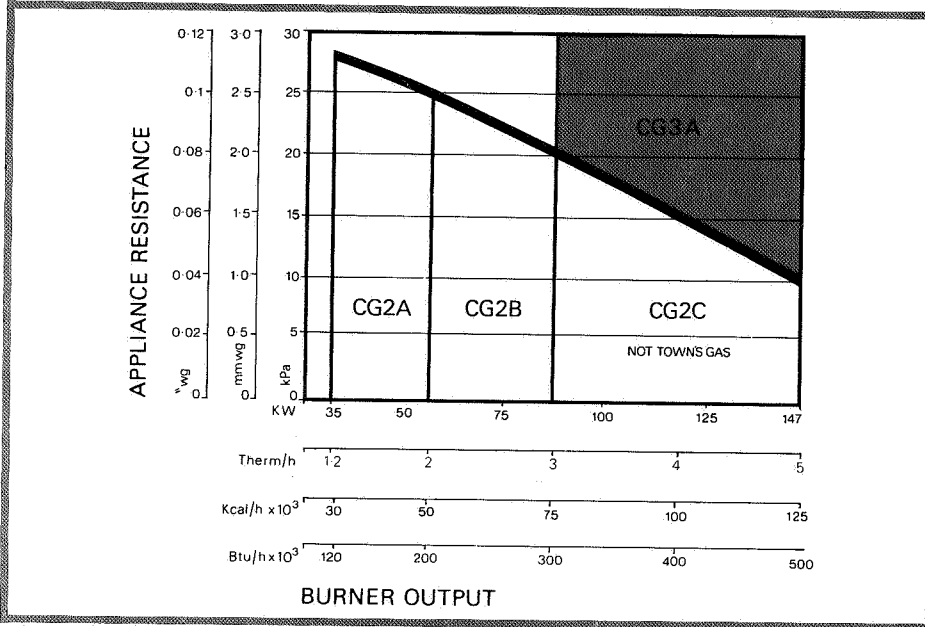
Mains supply (V) $\pm 10\%$	230
Frequency (Hz)	50
Motor (W)	75
(hp)	$\frac{1}{10}$
	2850 rev/min
Burner start current (A)	1.0
Burner run current (A)	0.6

Ignition by direct spark from double-wound and suppressed transformer secondary 5 kV-18 mA, earth return.



NU-WAY

BURNER SELECTION



ORDERING INFORMATION

When ordering a Nu-way model CG2 burner please provide the following information in order to expedite your order.

Type of appliance with which the burner is to be used.

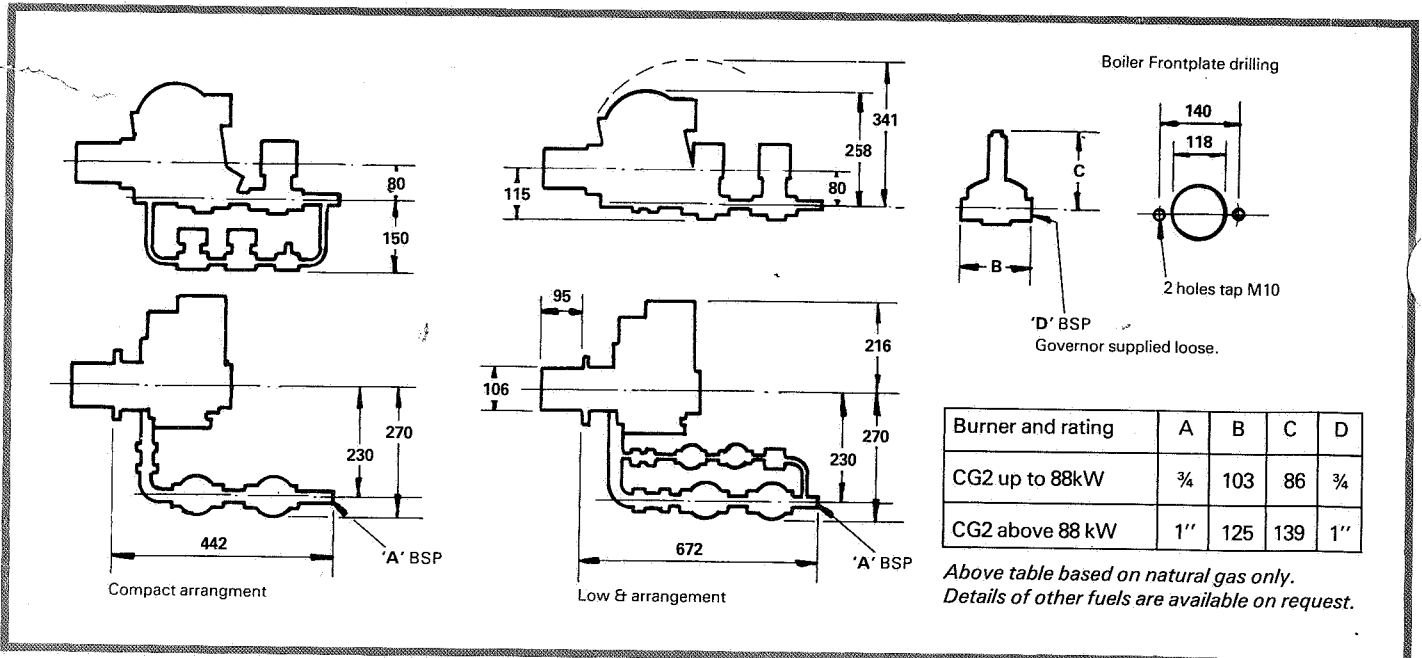
Appliance rating and resistance.

Specification of electrical supply locally available, i.e. voltage and frequency.

Type of gas and pressure available

Burner selection graph is for CG2 burners only. For details of other burners see relevant data.

DIMENSIONS



Nu-way Heating Plants Limited
Droitwich, WR9 8NA, England

Telephone: Droitwich (09057) 2331 & 2527
Telex: 338551. Cables: JASNU DROITWICH

Nu-way policy is one of continuous improvement. The right to change prices and specifications without notice is reserved.

